

LANDSCAPE LEGEND

- (3") ~ INDICATES PROPOSED RED OAK (MIN. 2" CALIBER)
- (4") ~ INDICATES PROPOSED RED SUNSET MAPLE (MIN. 2" CALIBER)
- (3") ~ INDICATES PROPOSED WHITE PINE (MIN. 2" CALIBER)
- (3") ~ INDICATES PROPOSED WHITE PINE (MIN. 2" CALIBER)

***LANDSCAPING AS DEPICTED IS SUBJECT TO FINAL DESIGN BY A QUALIFIED LANDSCAPE DESIGNER.

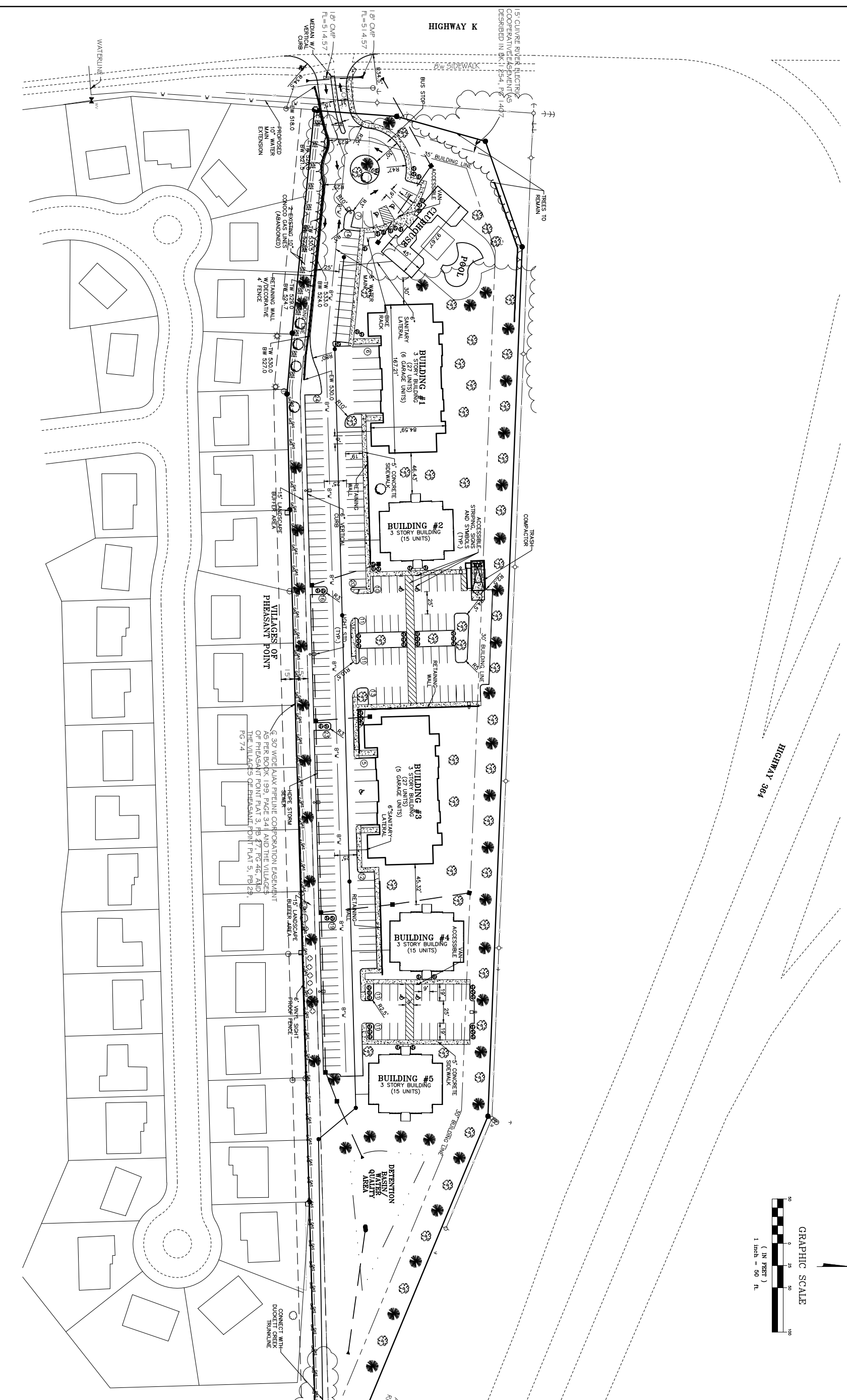
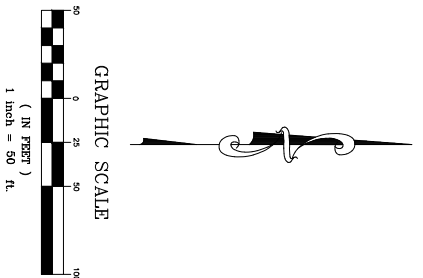
15' WIDE LANDSCAPE BUFFER: LANDSCAPING SHALL BE PROVIDED AT THE FOLLOWING QUANTITIES: TREES SHALL VARY IN SIZE & QUANTITIES SO AS TO PROVIDE APPROPRIATE SCREENING.

FLOWERING TREES 4 PER 100'
 DECAIDUOUS TREES 2 PER 100'
 EVERGREEN TREES 2 PER 100'

A TOTAL OF 1.5 PLANT UNITS SHALL BE PROVIDED FOR EVERY 100'.

LANDSCAPE LEGEND FOR BUFFER

- EVERGREEN TREE (6' MIN. HT.) - 10pts each
- WHITE PINES/AUSTRIANS
- DECAIDUOUS TREE (1 1/2' MIN. CAL.) - 10pts each
- PIN OAKS, ASH, SWEET GUM
- FLOWERING TREES (1 1/2' MIN. CAL.) - 5pts each
- MAGNOLIA, DOGWOOD, RED BUD



A SITE PLAN FOR
HWY 364 & HWY K
 HIGHWAY K
 O'FALLON, MO

PREPARED FOR:
 ILL. COMMUNITIES
 6642 CLAYTON RD., #140
 ST. LOUIS, MO 63117
 954-673-6860



**ENGINEERING
 PLANNING
 SURVEYING**

221 Point Park Blvd.
 St. Charles, MO 63301
 636-928-8552
 FAX 928-1718

Box Engineering Company, Inc.
 Missouri State Certificate of Authority
 Surveying #200144

REVISIONS

11/17/20	CIV Review
----------	------------

DISCLAIMER OF RESPONSIBILITY
 I hereby declare my responsibility for all other portions, reports or other documents or instruments relating to or connected with this project or any part or portion of the use, installation, or engineering project or survey or other than those authorized by my seal.

Office: L. Helmsman
 Civil Engineer
 E29817

10-30-20
 DATE
 19-17956
 PROJECT NUMBER
 1795609e.DWG
 FILE NAME
 BWF
 DRAWN
 JCM
 CHECKED